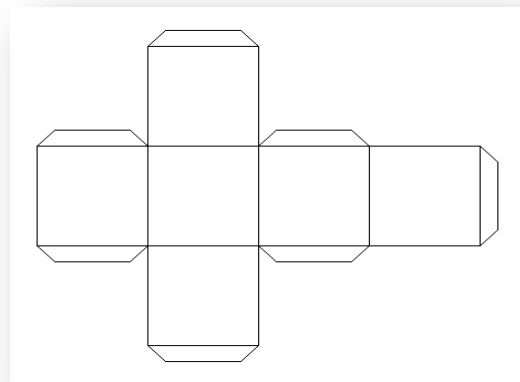
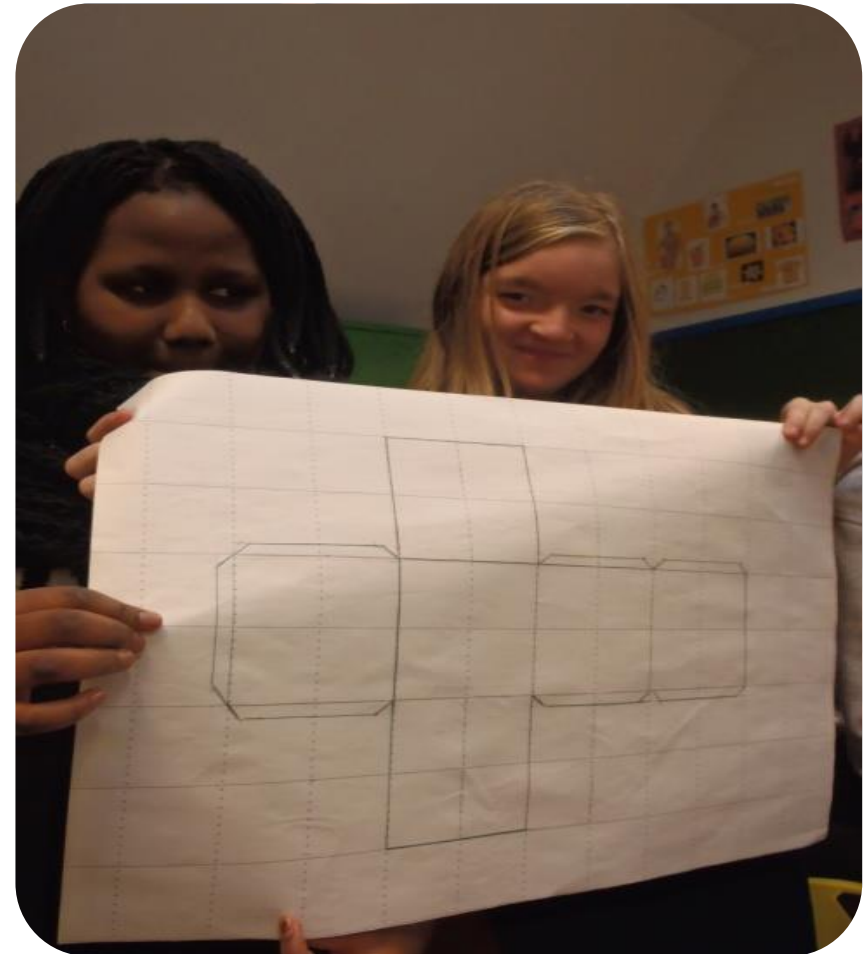
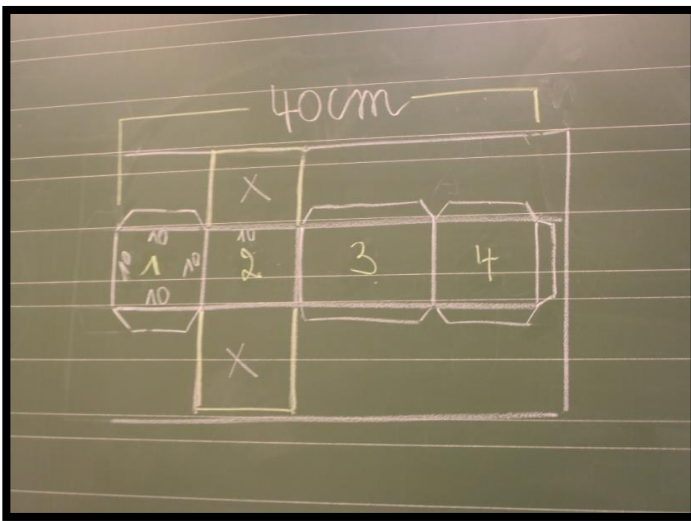


Cube net

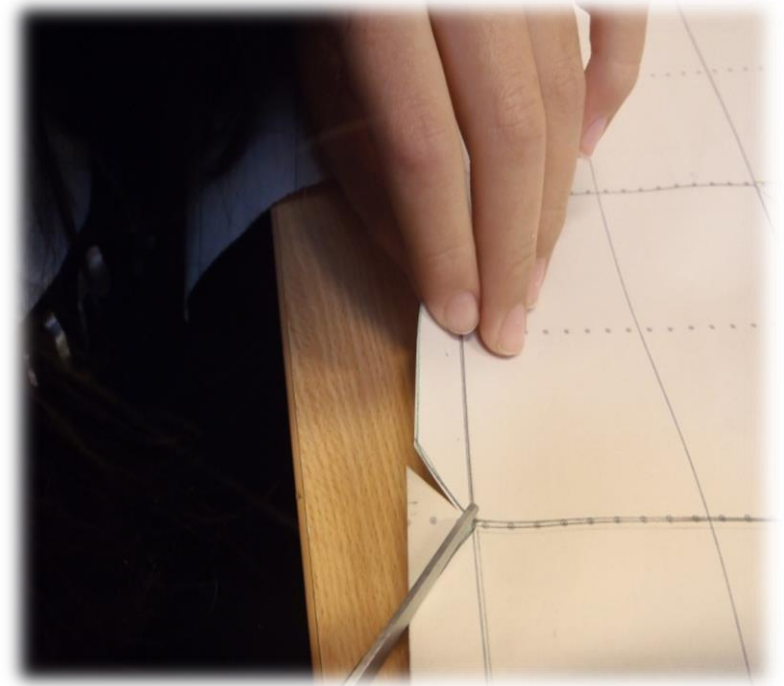
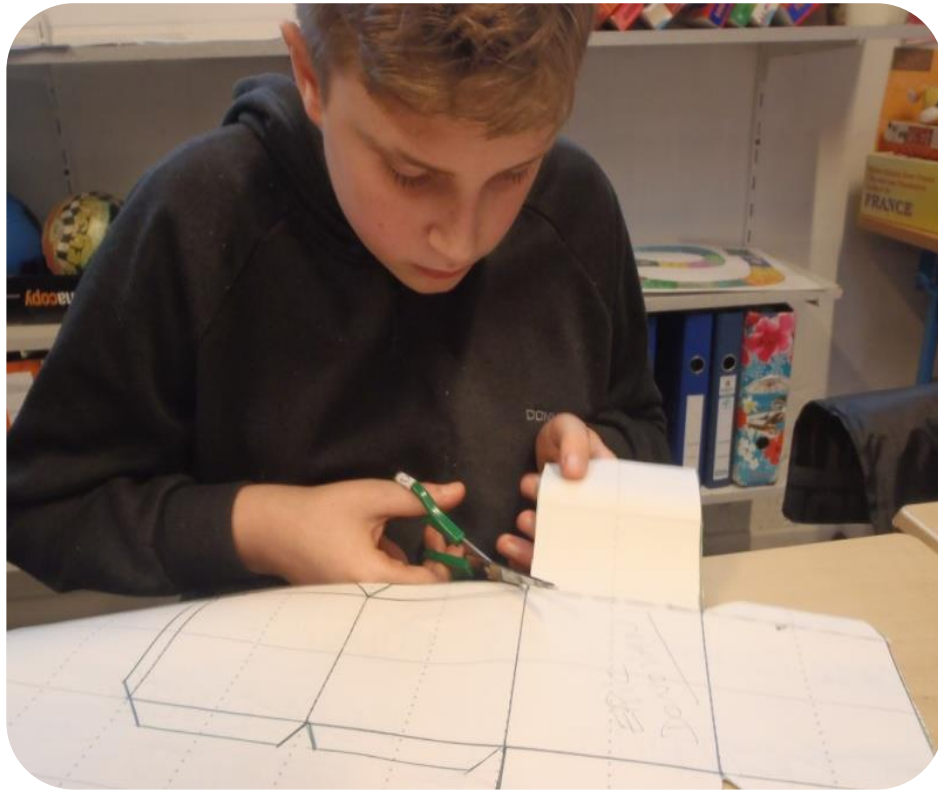
Geometry

Unfolding a cube

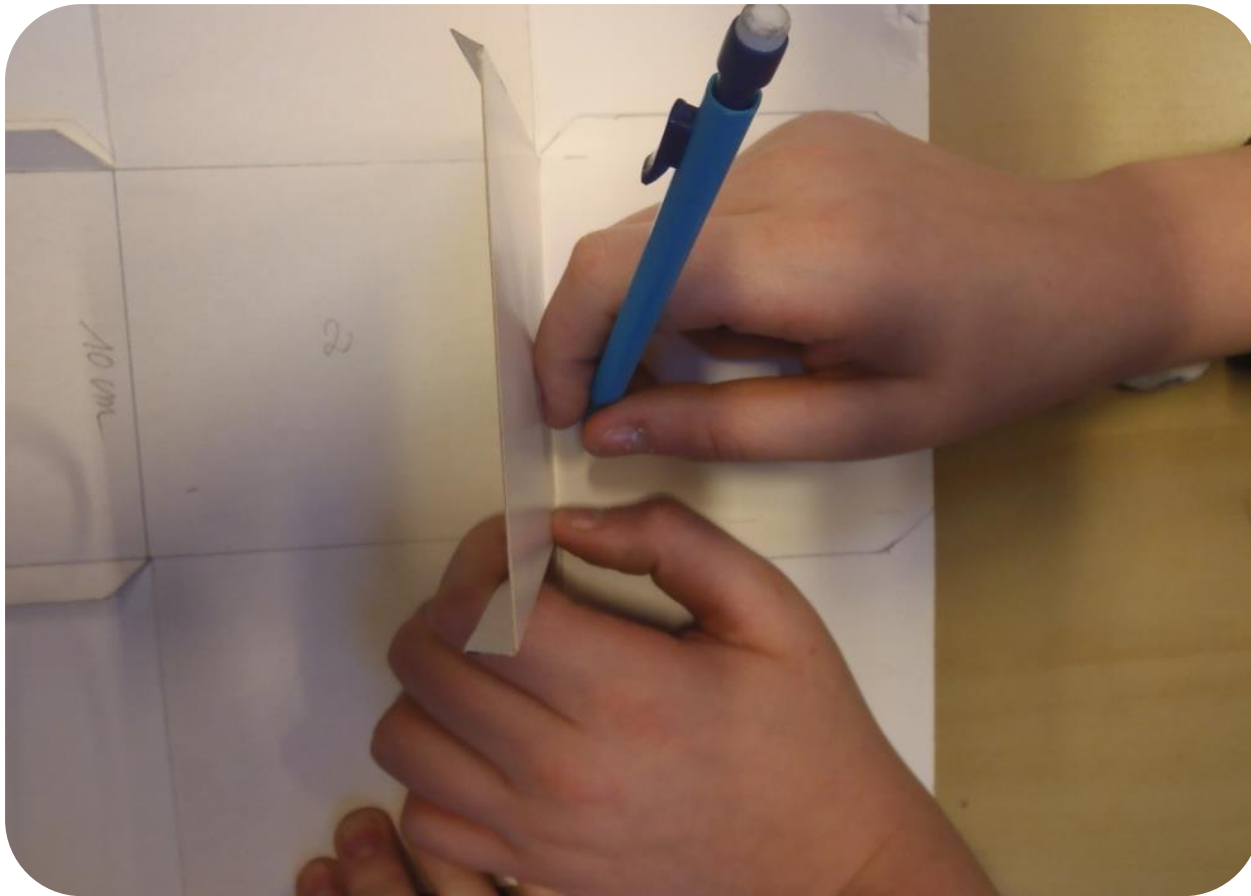
- Choose the length of the edge of the cube you want to make.
- Draw out a net design .
- Put a tab on every other edge for gluing it together.



Cut it out carefully, using scissors



Fold the design - Use a ball-point pen



**Now fold the paper to make right angles.
Use small dabs of glue to stick it.**

