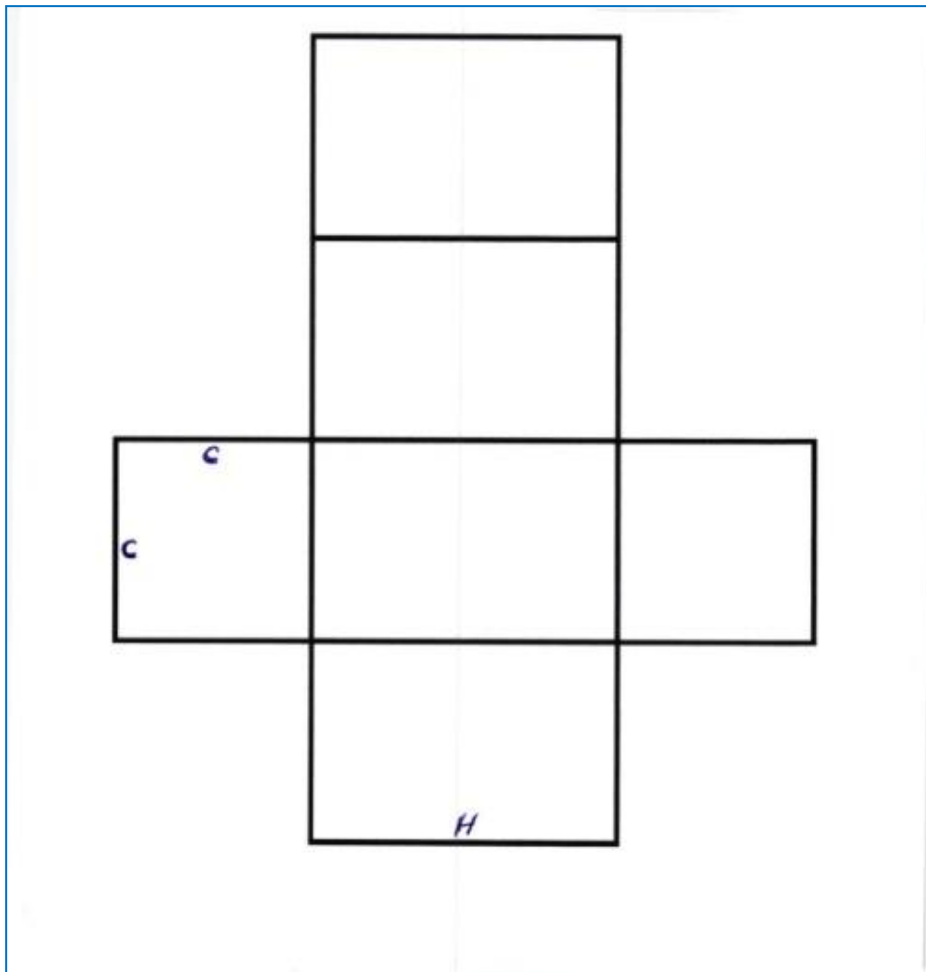


# PARALLELEPIPED NET

## Geometry

- *Unfolding a* rectangular parallelepiped
- Making a rectangular parallelepiped

Choose the length of the edge of the square , **C** and the height **H** of the parallelepiped you want to make and draw it on a sheet of paper

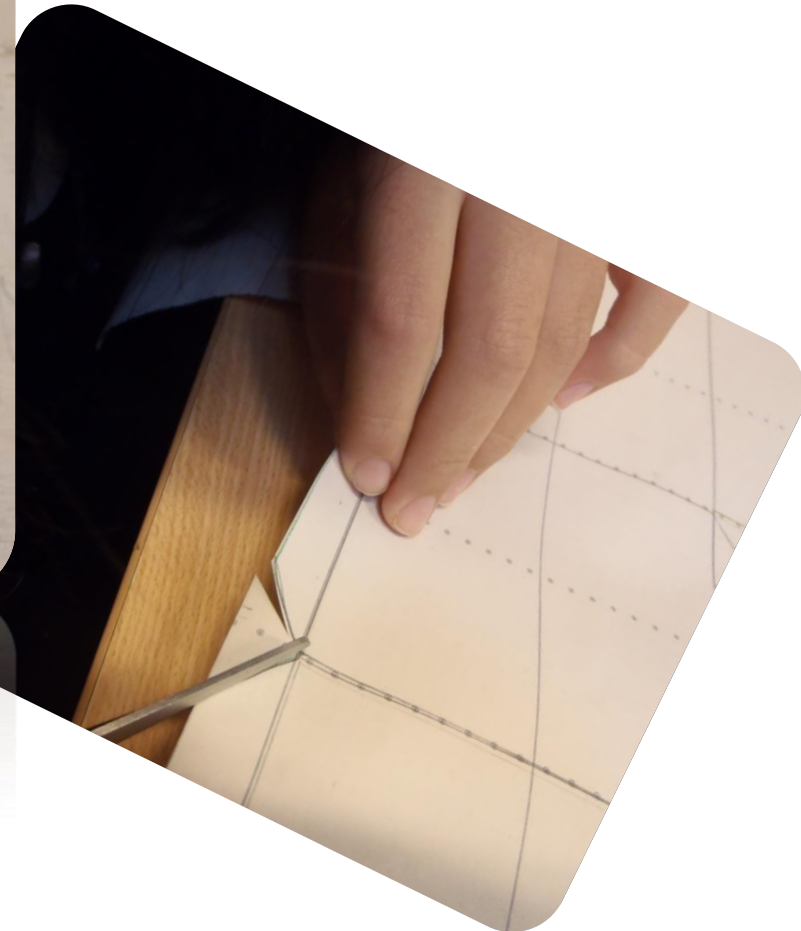


Draw out a net design with edges for gluing

Cut it out carefully, using a safety cutter



**Cut it out carefully, using a safety cutter**



# Fold the design - Use a ball-point pen



25.01.2015 14:19

**Now fold the paper to make right angles.  
Use small dabs of glue to stick it.**



Done!!



